

3D Shape Files for VS Products

Vehicles	2
Cars.....	2
Vans.....	7
SUVs	9
Motorcycles	10
Trucks.....	15
Other Vehicles.....	31
Common Vehicle Assets.....	32
Engines	32
Hitches.....	33
Payloads	36
Solid Axles	39
Transmissions.....	42
Environment.....	44
Billboards	44
Buildings	45
Pedestrians.....	52
Props.....	53
Road Signs.....	71
Trees	83
Trailers	85
All Trailers	85

Vehicle Sim products use numerous shapes in the animation of simulations. This document is a complete listing of the shape files available for use with your Vehicle Sim products. Each list is intended to be compiled by type.

Vehicles

Cars



Figure 1. A-Class, hatchback.



Figure 2. B-Class, hatchback.



Figure 3. B-Class, sports car.



Figure 4. C-Class, hatchback.



Figure 5. Exotic race car.



Figure 6. Exotic sports car.



Figure 7. D-Class Sedan.



Figure 8. European sedan, left-hand drive.



Figure 9. European sedan, right-hand drive.

Vans



Figure 10. D-Class, minivan.



Figure 11. European van.



Figure 12. European large van.



Figure 13. European Van (Box Payload).

SUVs



Figure 14. D-Class, SUV.



Figure 15. E-Class, SUV.



Figure 16. Large SUV.

Motorcycles



Figure 17. Three-wheel scooter.



Figure 18. Big sports bike.



Figure 19. Classic sports bike.



Figure 20. Cruiser.



Figure 21. Motorcross.



Figure 22. Scooter.



Figure 23. Small scooter.



Figure 24. Small sports bike (chain drive).



Figure 25. Sports touring bike.



Figure 26. Touring bike.

Trucks



Figure 27. Conventional van.



Figure 28. Three-axle conventional van.



Figure 29. Four-axle conventional van.



Figure 30. Day cab.



Figure 31. Three-axle day cab.



Figure 32. Four-axle day cab.



Figure 33. European Cab-Over.



Figure 34. Three-axle European Cab-Over.



Figure 35. Three-axle High-Definition Cab-Over.



Figure 36. LCF van.



Figure 37. Four-axle LCF van.



Figure 38. Three-axle sleeper High Res.



Figure 39. Three-axle sleeper.



Figure 40. Four-axle sleeper.



Figure 41. Five-axle sleeper.



Figure 42. Three-axle dump truck.



Figure 43. Delivery truck.



Figure 44. HD utility truck.



Figure 45. LD utility truck.



Figure 46. Off-road pickup truck.



Figure 47. Reg cab pickup (6.5 and 8ft beds).



Figure 48. Super cab pickup (5.5, 6 and 8ft beds).



Figure 49. Crew cab pickup (5.5, 6 and 8ft beds).



Figure 50. Super cab pickup, lifted.



Figure 51. Dually reg cab pickup (6.5 and 8ft beds).



Figure 52. Dually super cab pickup (5.5, 6 and 8ft beds).



Figure 53. Crew cab pickup (5.5, 6 and 8ft beds).



Figure 54. Compact pickup.



Figure 55. School bus.



Figure 56. Tour bus.



Figure 57. Three-axle tour bus.

Other Vehicles



Figure 58. Three-wheeler.



Figure 59. Tractor.

Common Vehicle Assets

Engines



Figure 60. Inline engine.



Figure 61. V-design engine.

Hitches

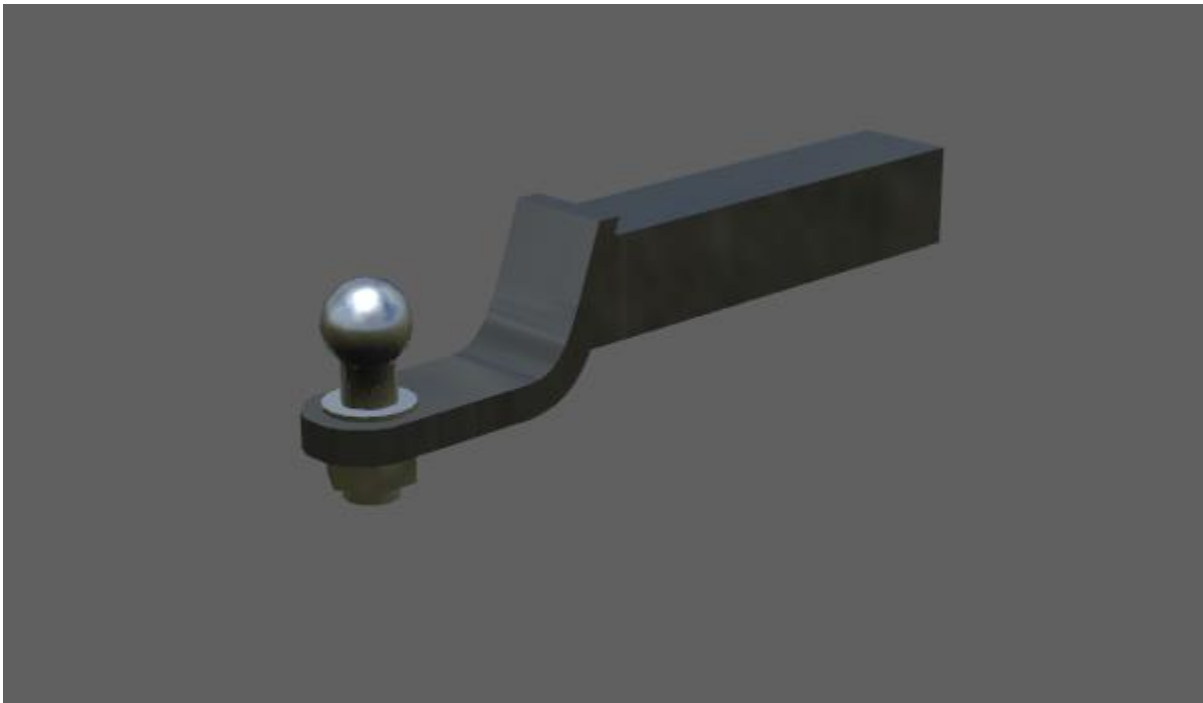


Figure 62. Ball hitch.

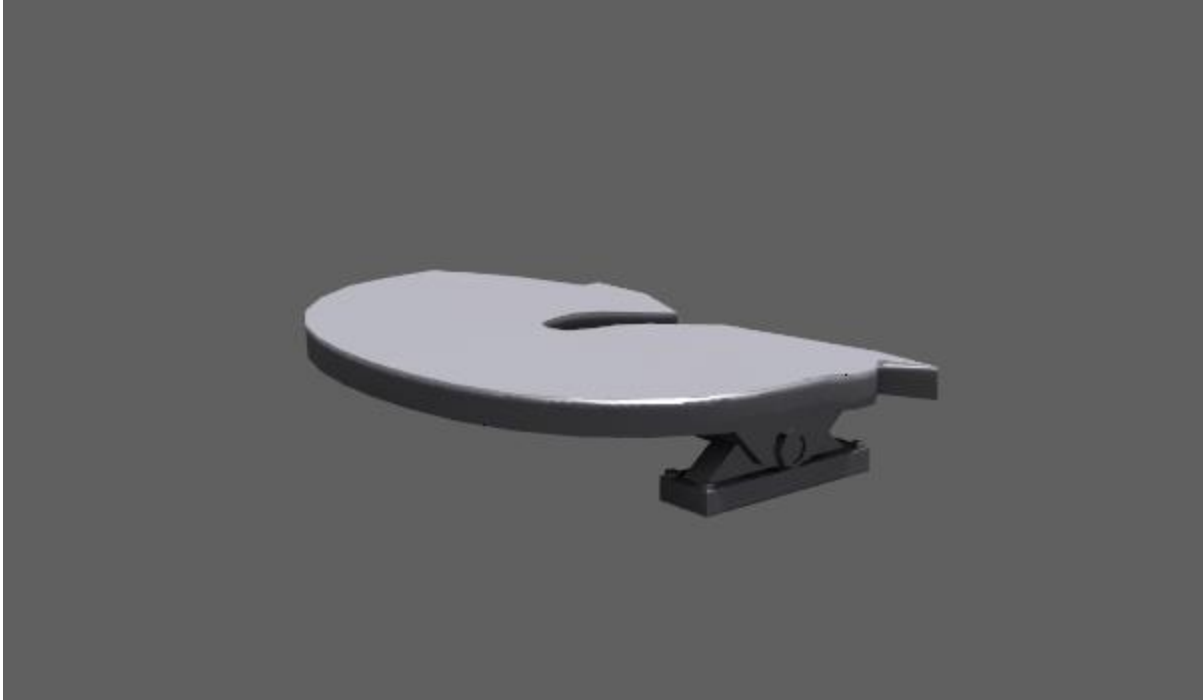


Figure 63. HD fifth wheel.

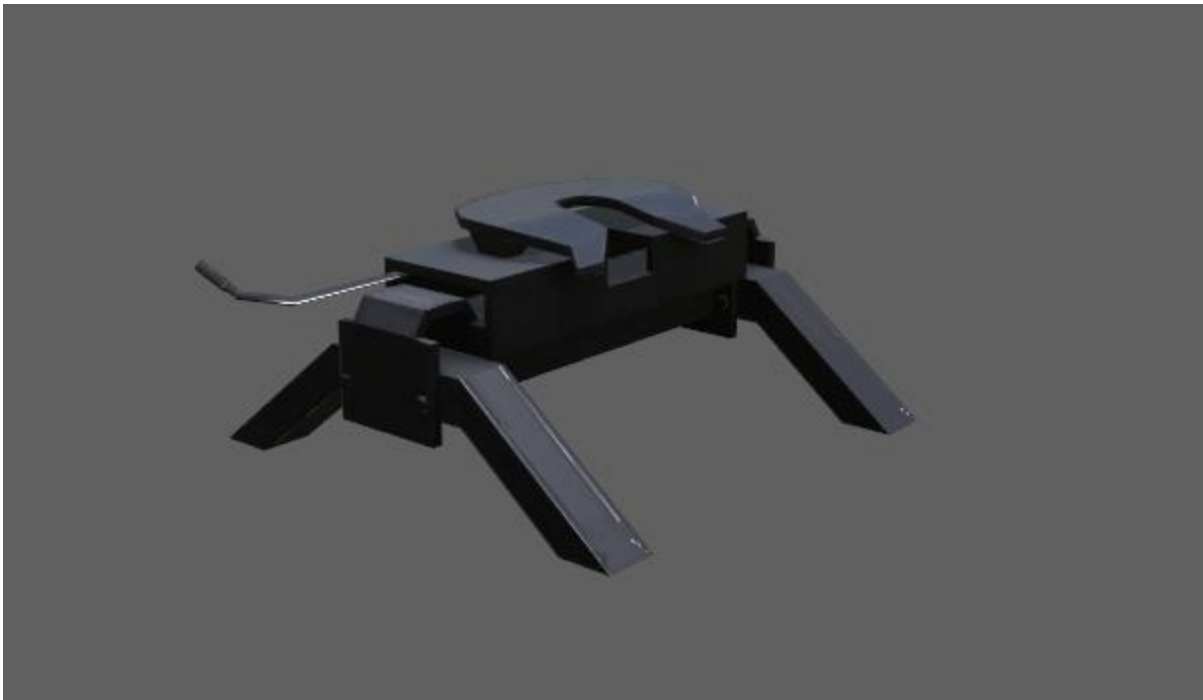


Figure 64. LD fifth wheel.

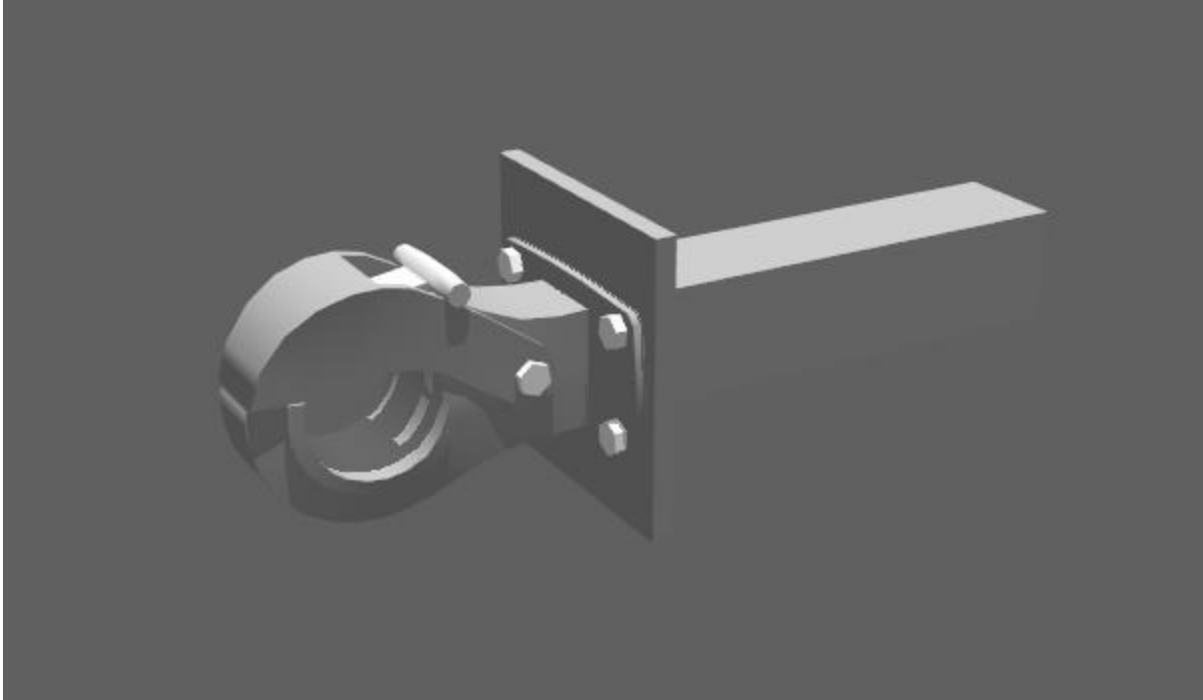


Figure 65. Pintle hitch.



Figure 66. Landing jacks.

Payloads



Figure 67. Crate.



Figure 68. Covered Steel Coil.



Figure 69. Drum.

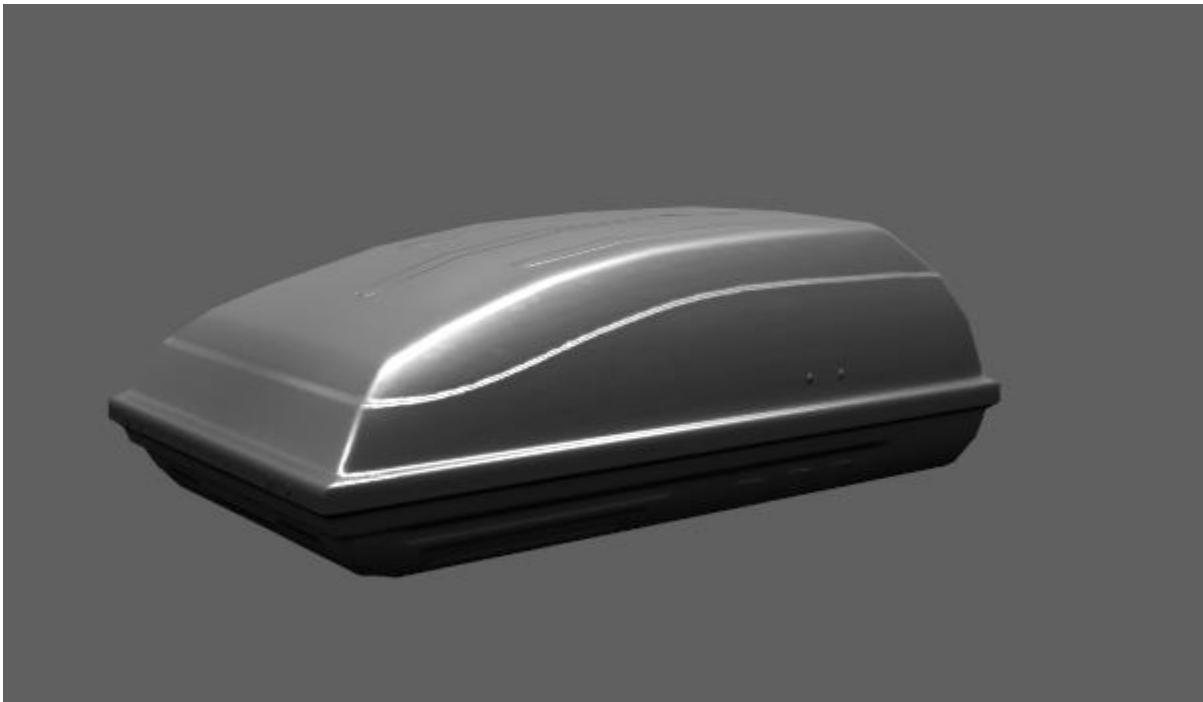


Figure 70. Cargo box.



Figure 71. Shipping containers (53,48,40,20,10 and 8ft).



Figure 72. Tractor.

Solid Axles

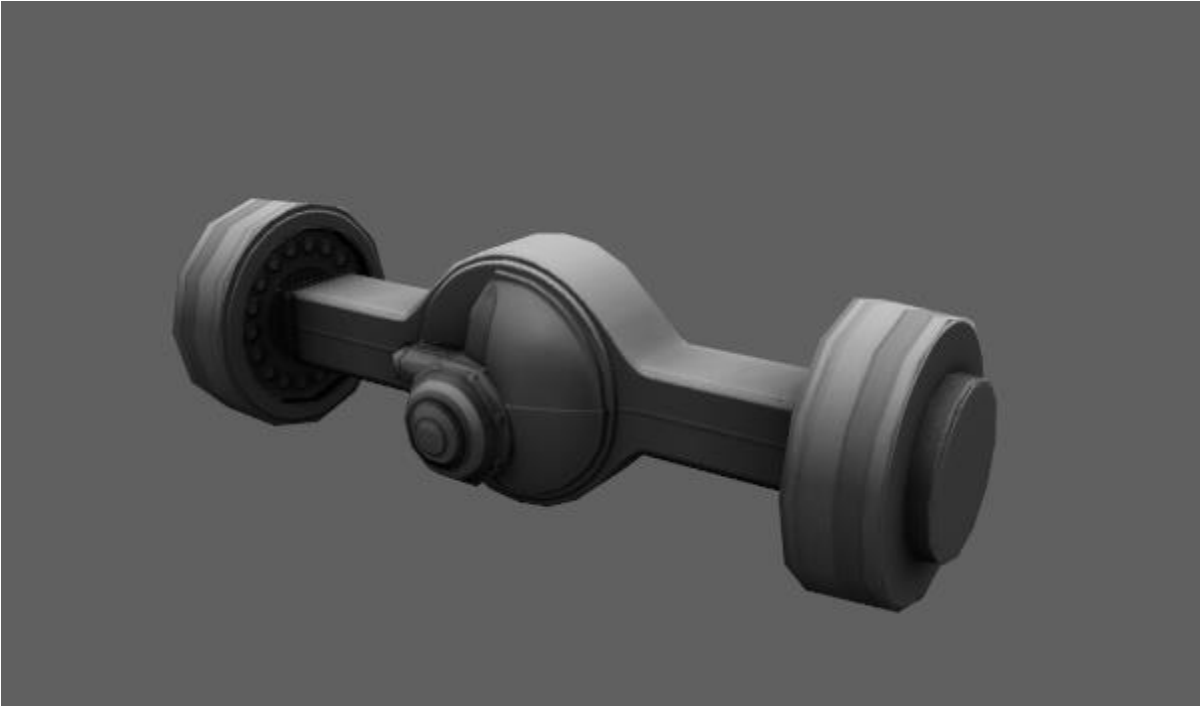


Figure 73. HD driven axle rear.

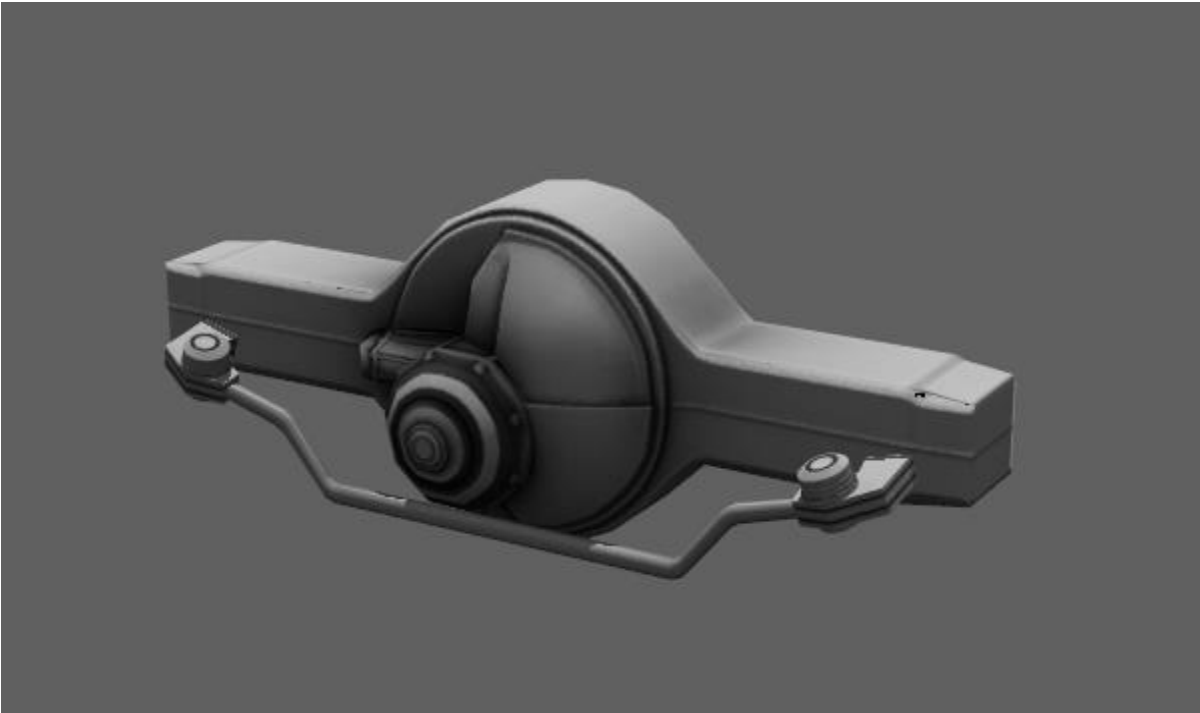


Figure 74. HD driven axle steer.

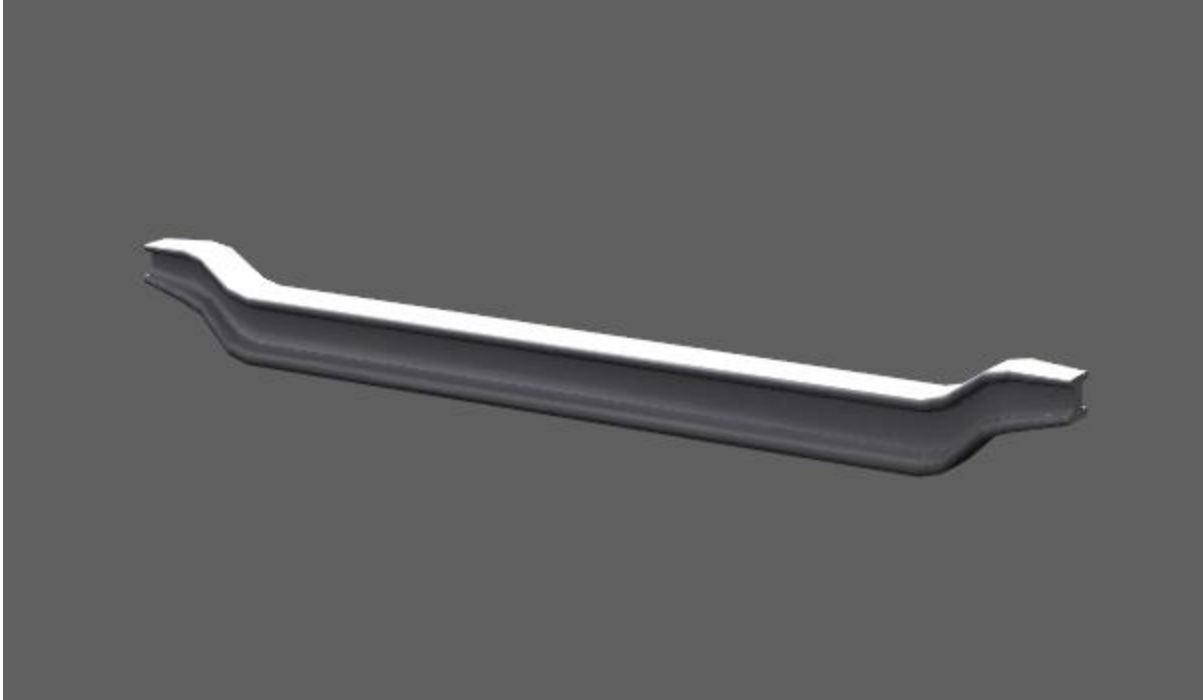


Figure 75. HD axle steered.



Figure 76. LD axle driven.

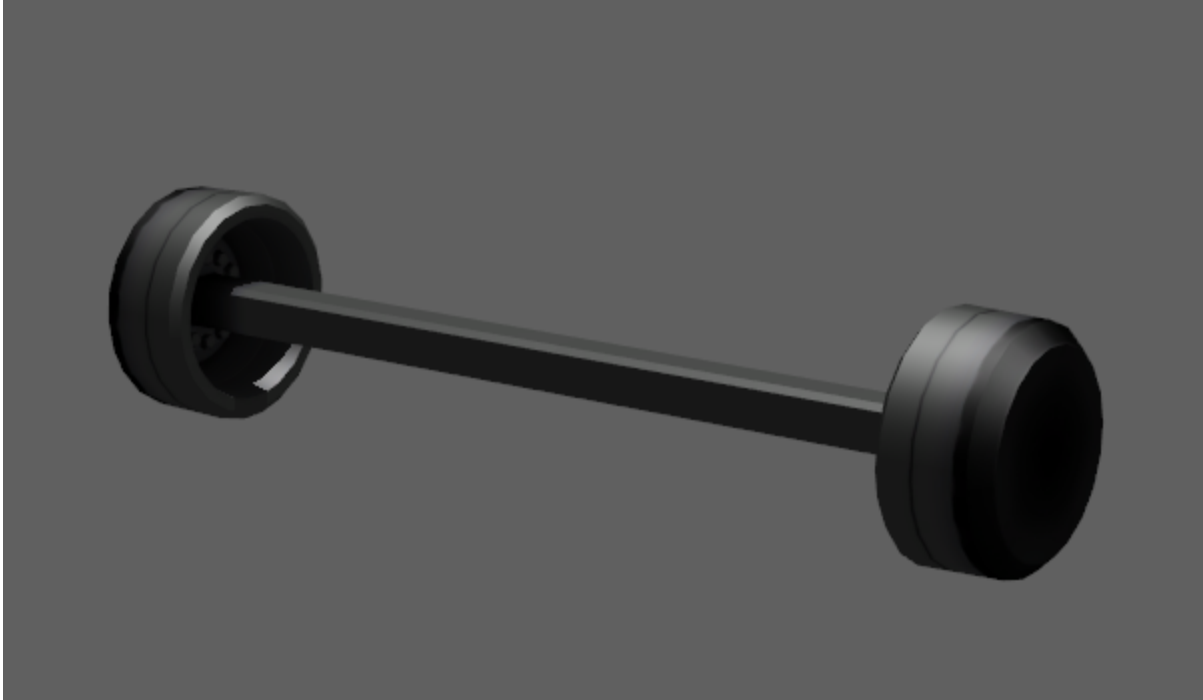


Figure 77. Trailer axle.

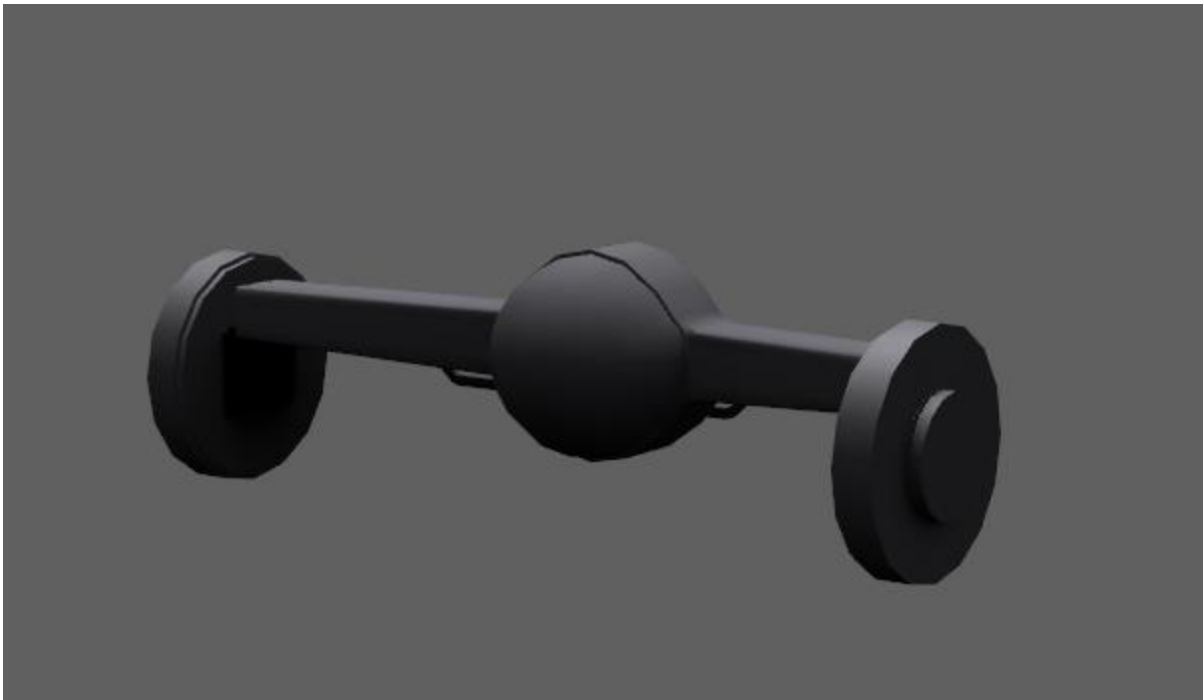


Figure 78. Utility front axle.



Figure 79. Utility rear axle.

Transmissions



Figure 80. Longitudinal transmission.

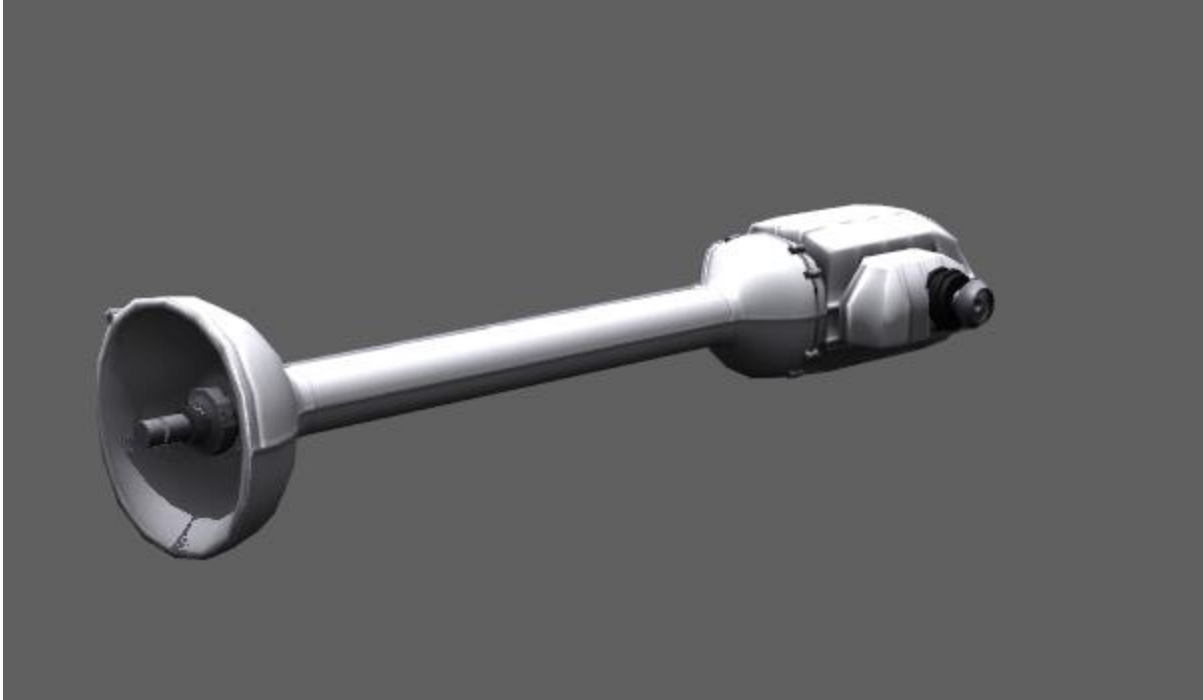


Figure 81. Torque tube.

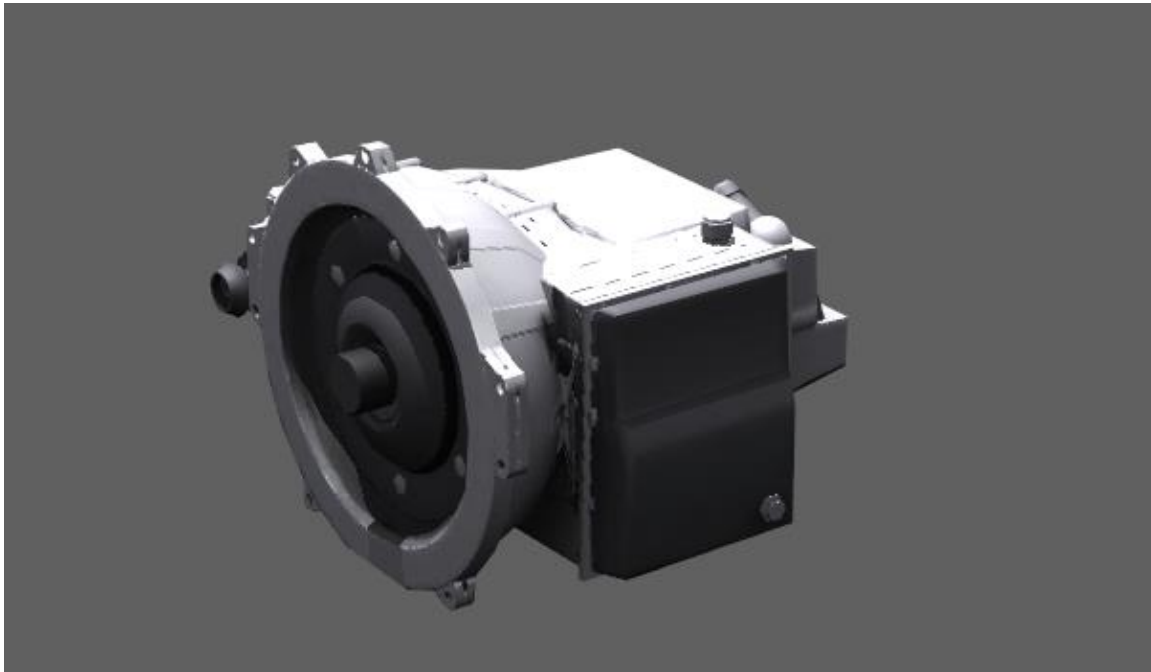


Figure 82. Transverse transmission.

Environment

Billboards



Figure 83. Large billboard.



Figure 84. Standard billboard.

Buildings



Figure 85. Downtown building 01 (3,4,6 and 10) story versions.

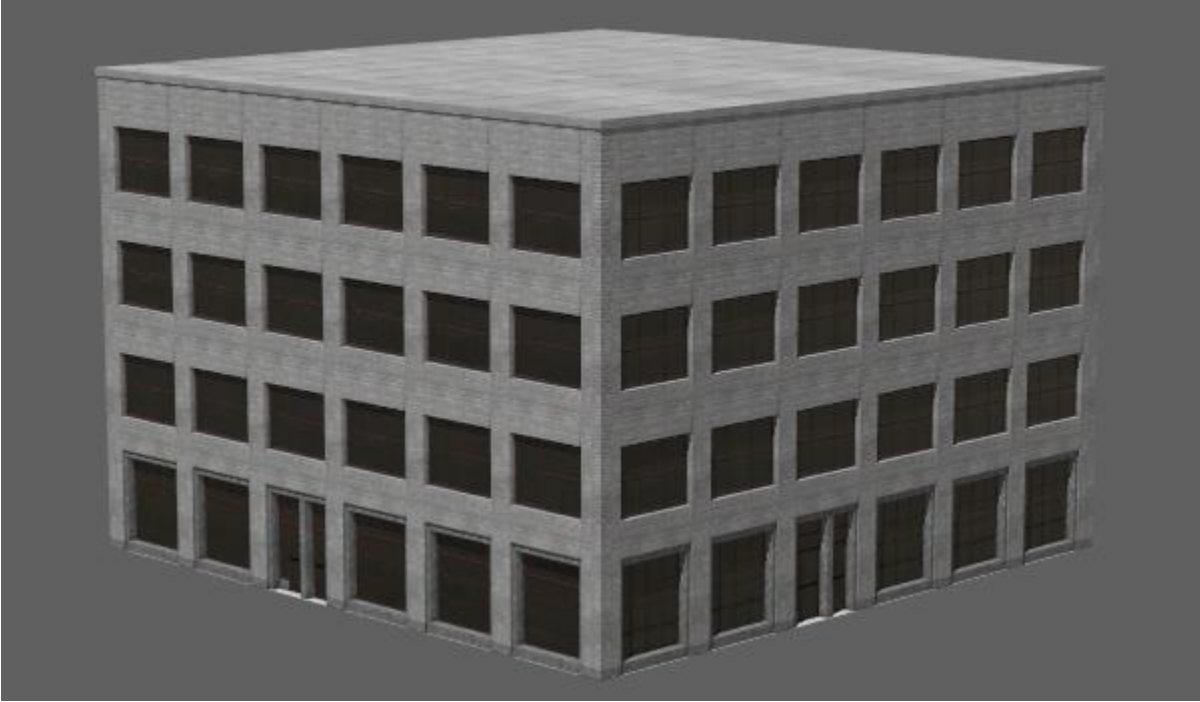


Figure 86. Downtown building 02 (3,4,6 and 10) story versions.

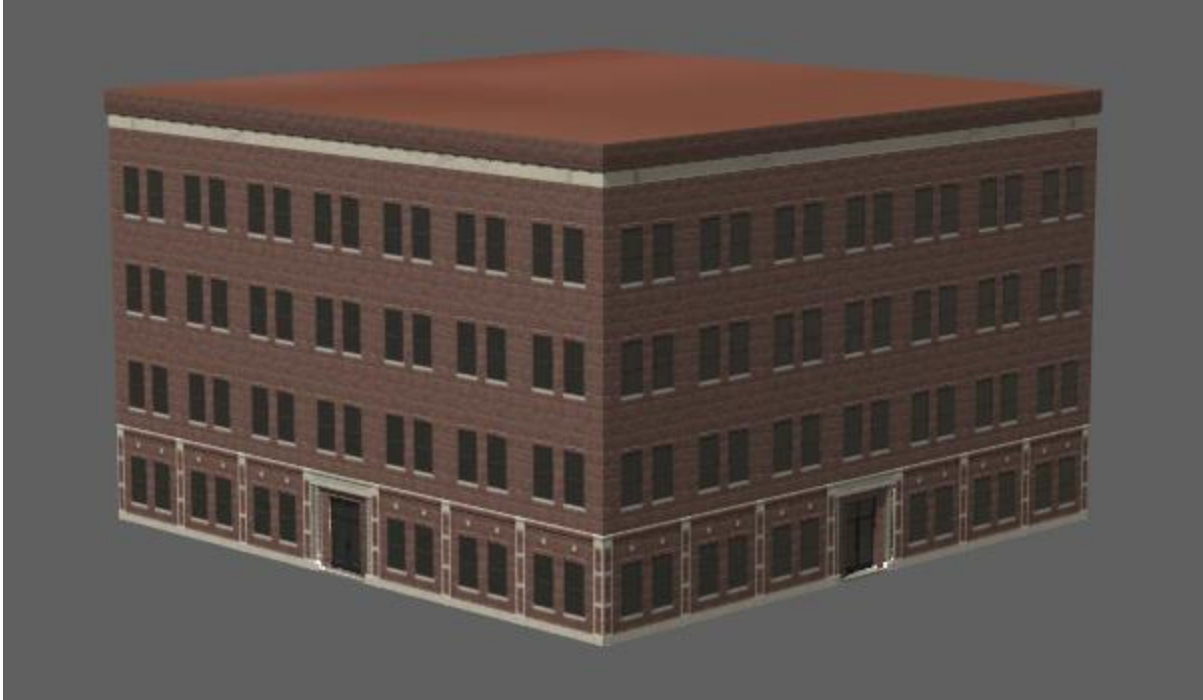


Figure 87. Downtown building 03 (3,4,6 and 10) story versions.



Figure 88. Downtown building 04 (3,4,6 and 10) story versions.

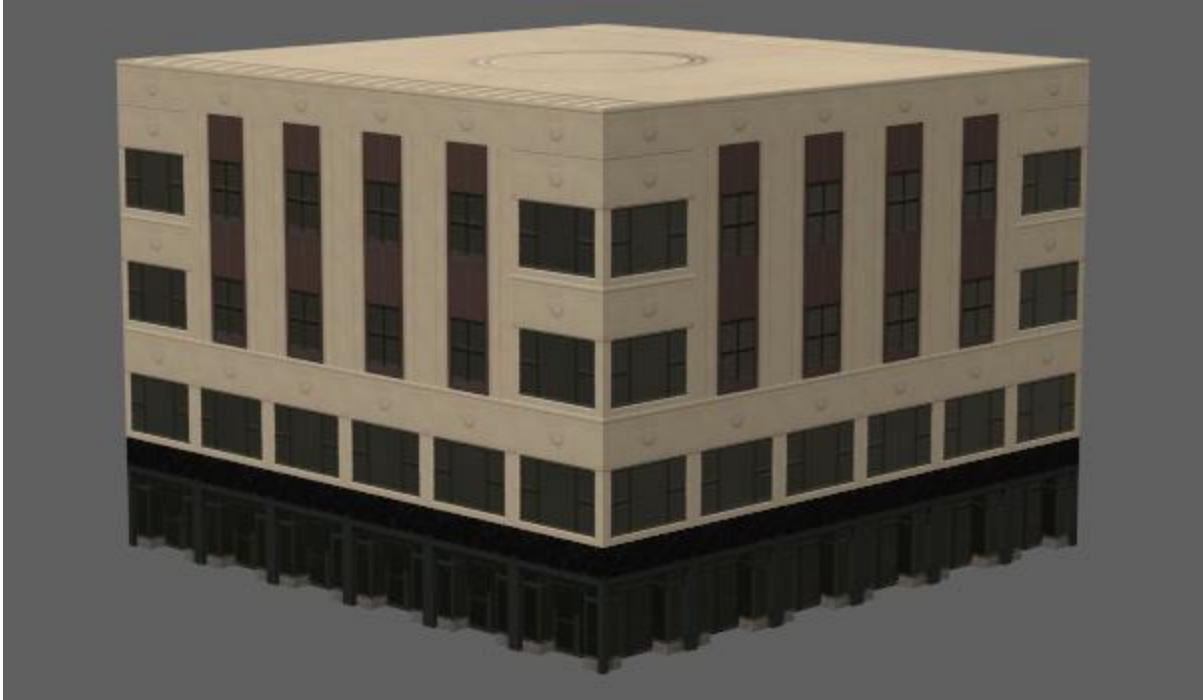


Figure 89. Downtown building 05 (3,4,6 and 10) story versions.



Figure 90. Downtown building 06 (3,4,6 and 10) story versions.

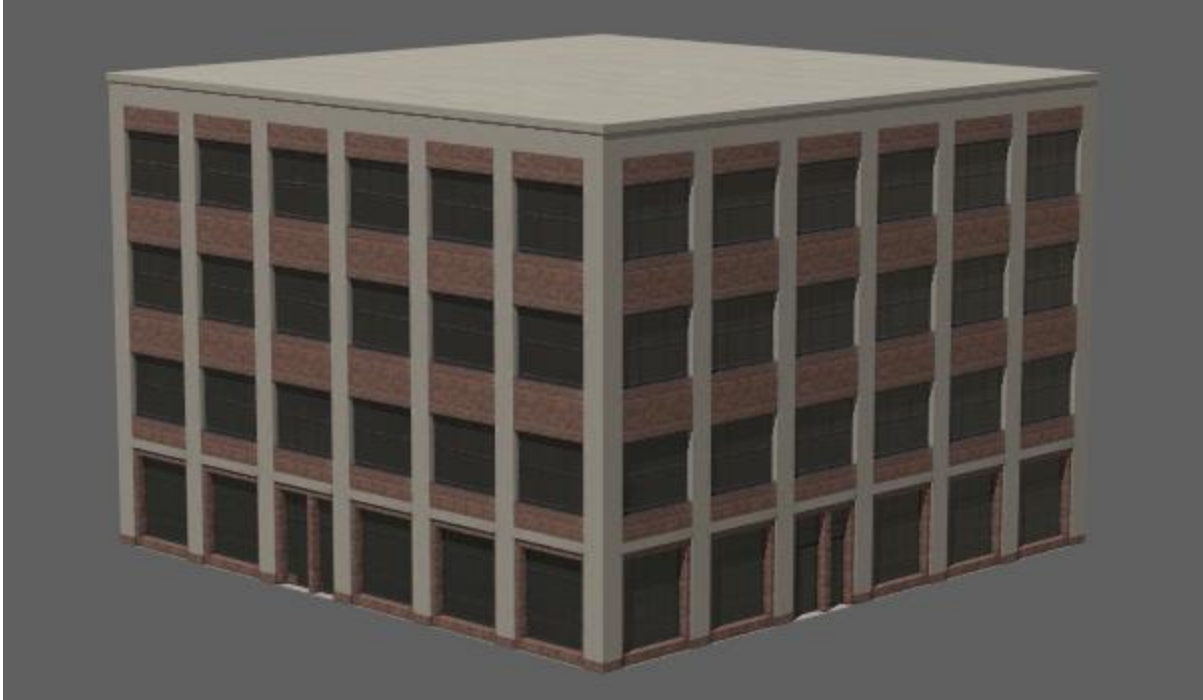


Figure 91. Downtown building 07 (3,4,6 and 10) story versions.

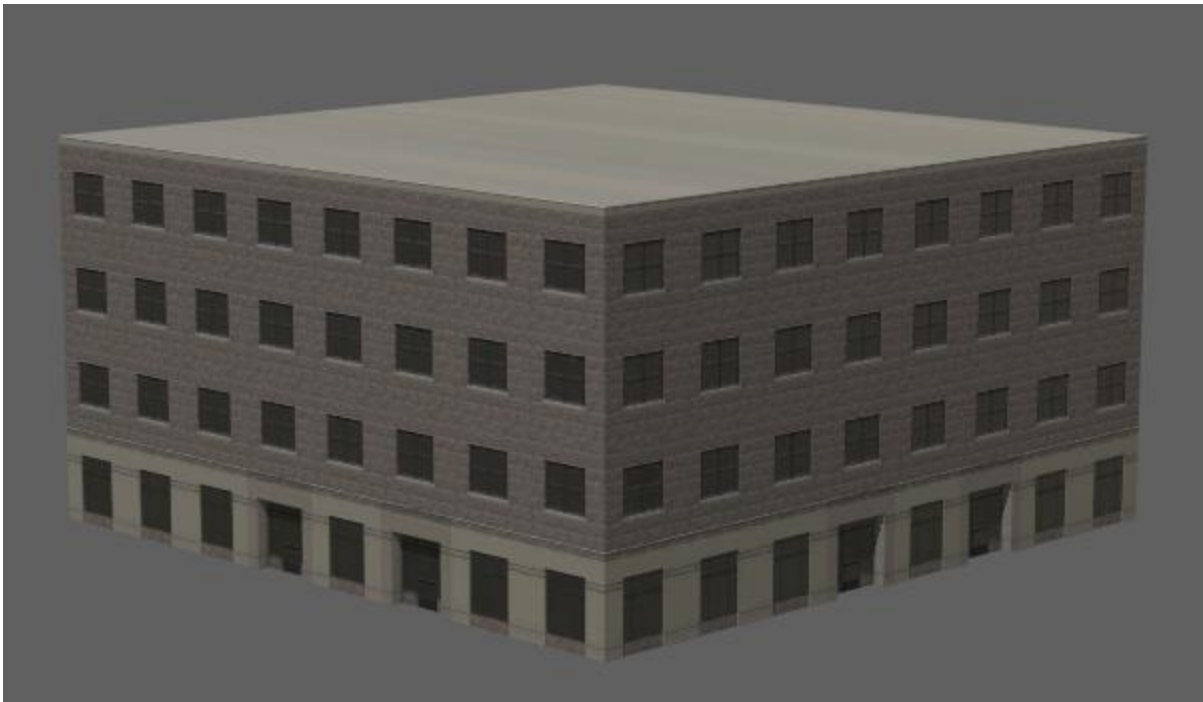


Figure 92. Down town building 08 (3,4,6 and 10) Story Versions.

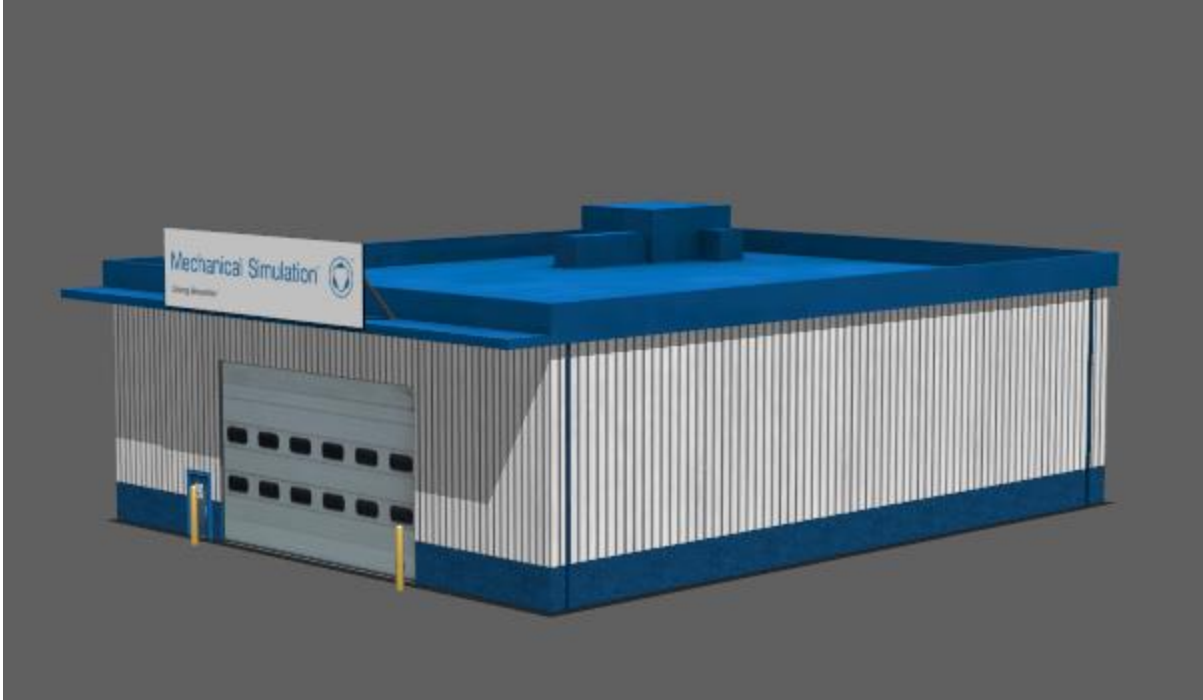


Figure 93. K & C garage.



Figure 94. Sky scraper 01.

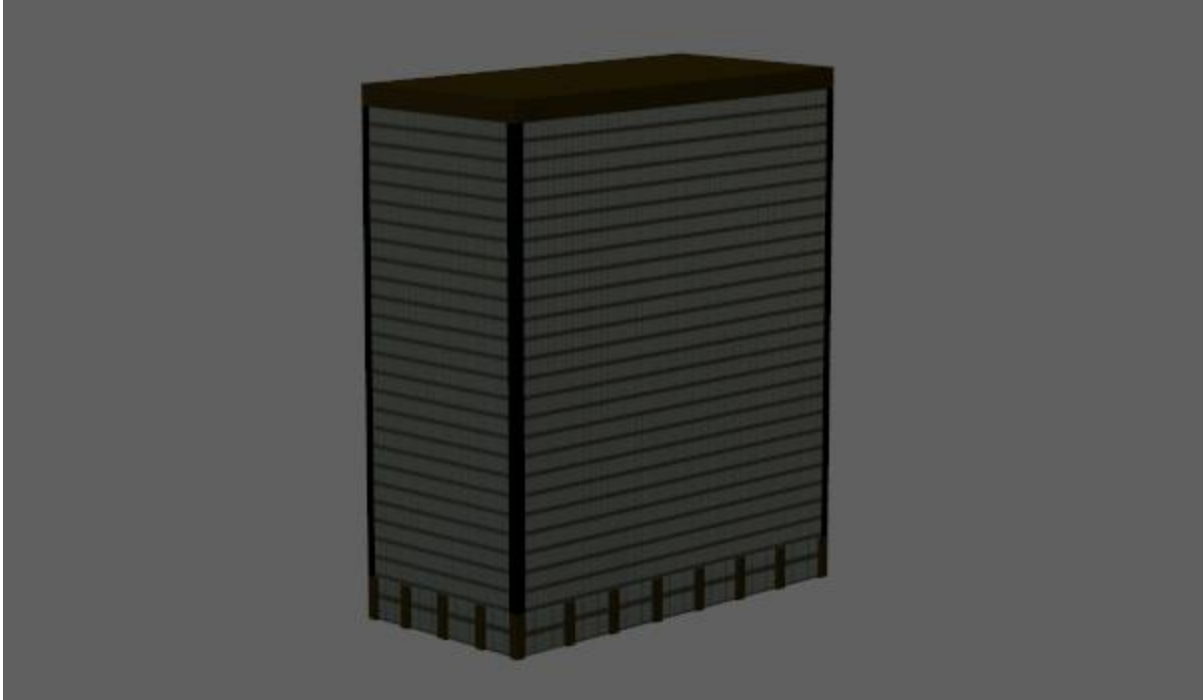


Figure 95. Sky scraper 02 V1.

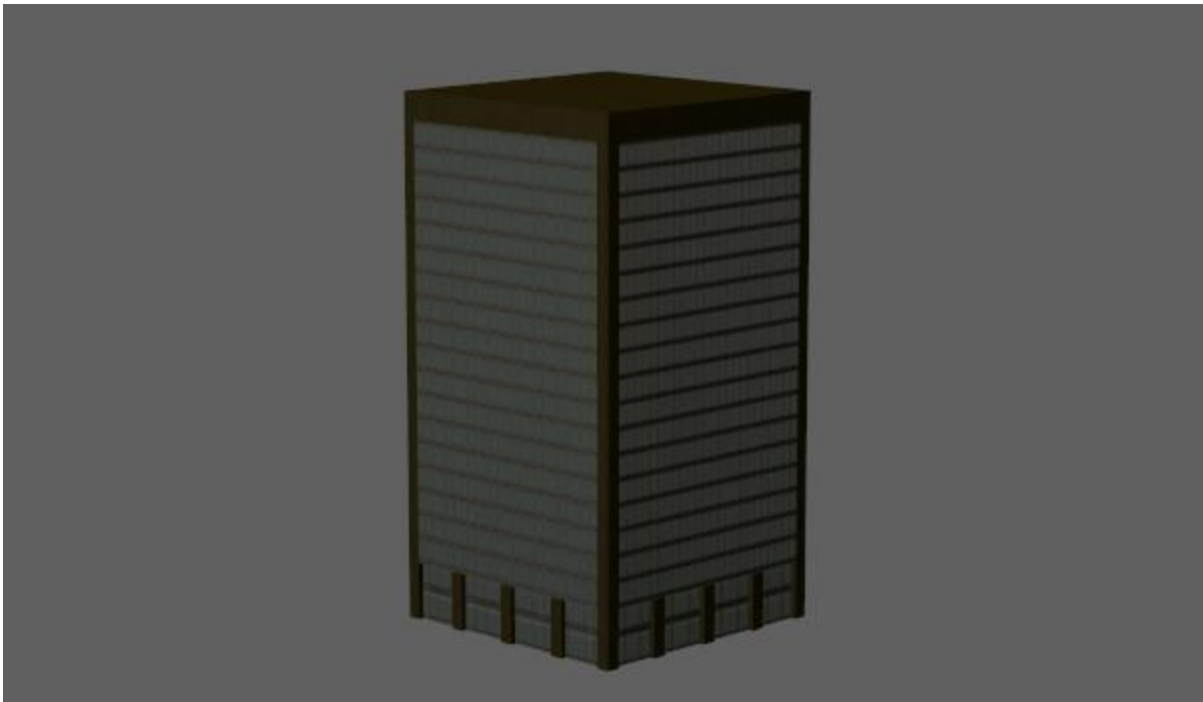


Figure 96. Sky scraper 02 V2.



Figure 97. Two story house.



Figure 98. Warehouse.

Pedestrians



Figure 99. Asian female, idle (animated).



Figure 100. Asian female, walk (animated).

Props

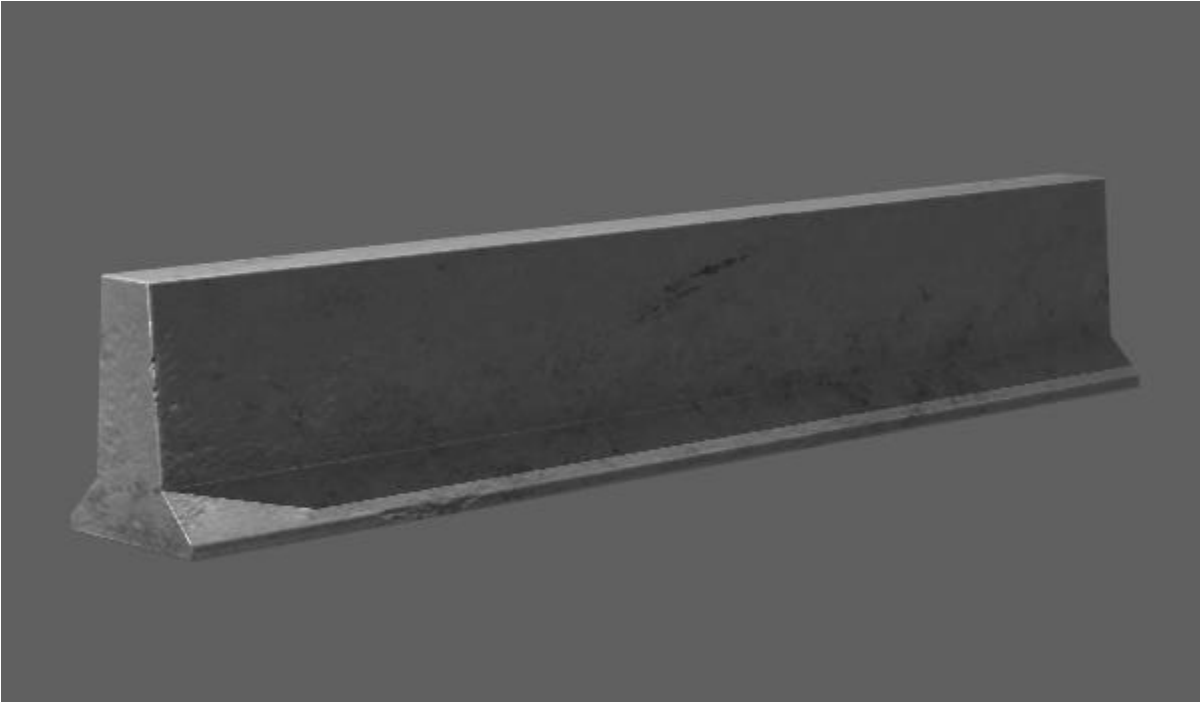


Figure 101. Concrete barrier.



Figure 102. Bike rack.



Figure 103. Bus stop.



Figure 104. Dumpster.

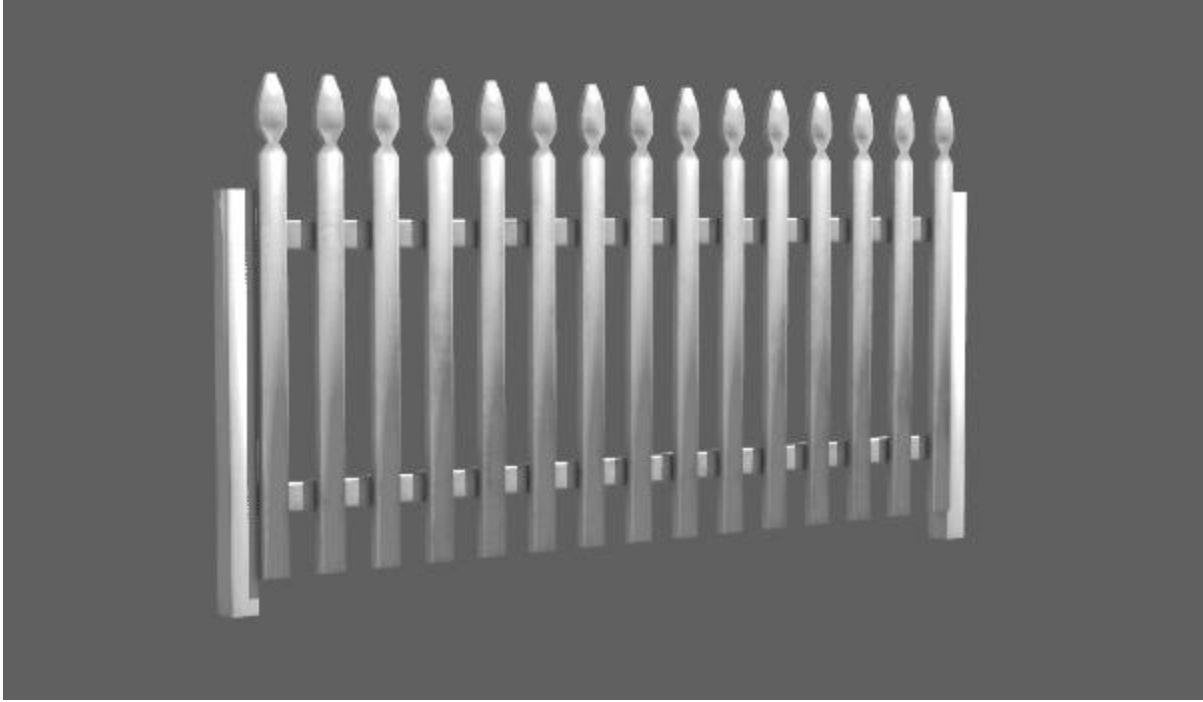


Figure 105. Picket fence.



Figure 106. Stone pillar.



Figure 107. Wooden post.



Figure 108. Fire hydrant.

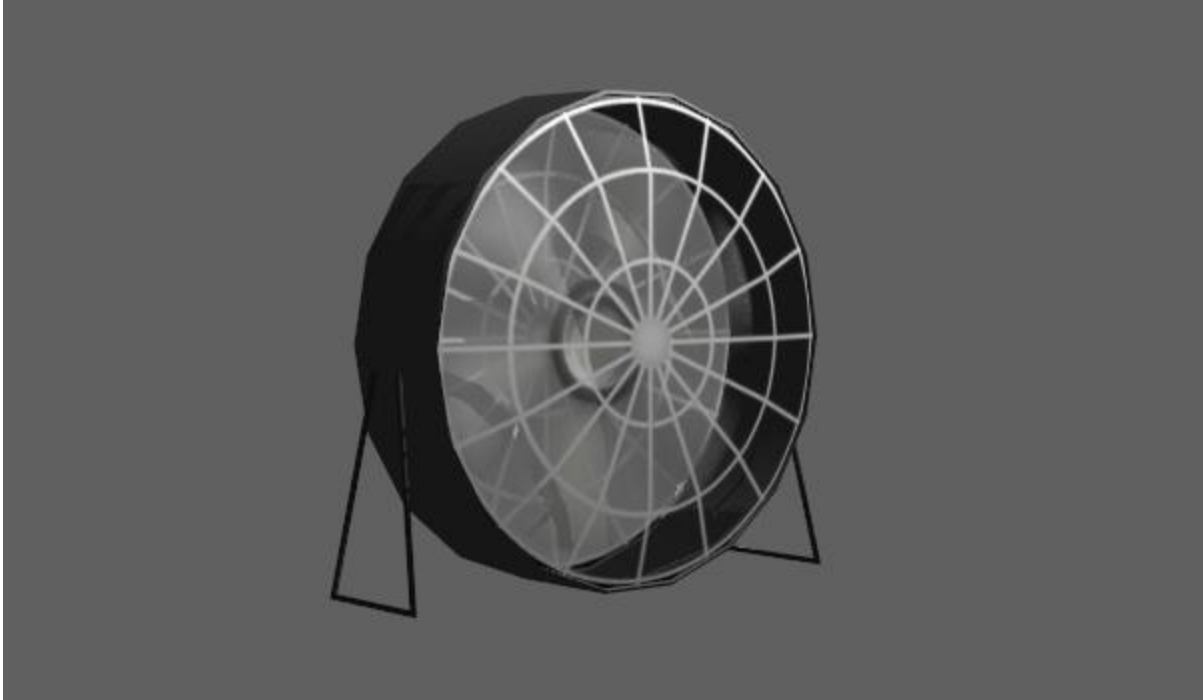


Figure 109. Floor fan.



Figure 110. Farm gate.

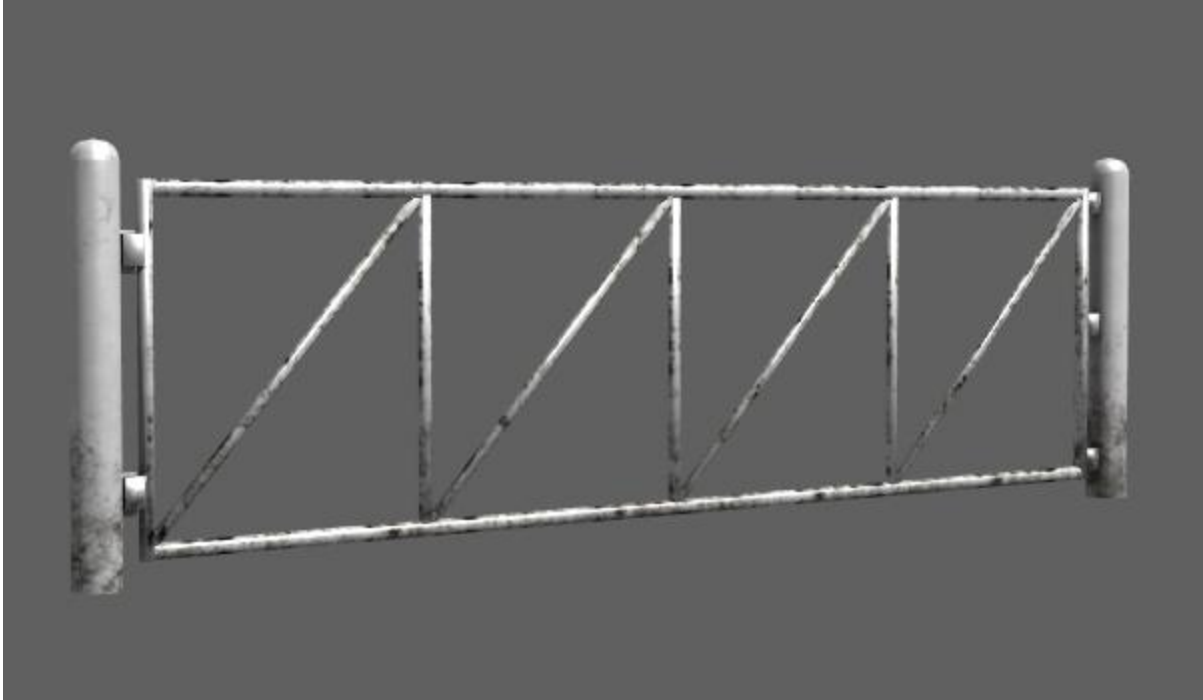


Figure 111. Metal gate.



Figure 112. Guard rail.

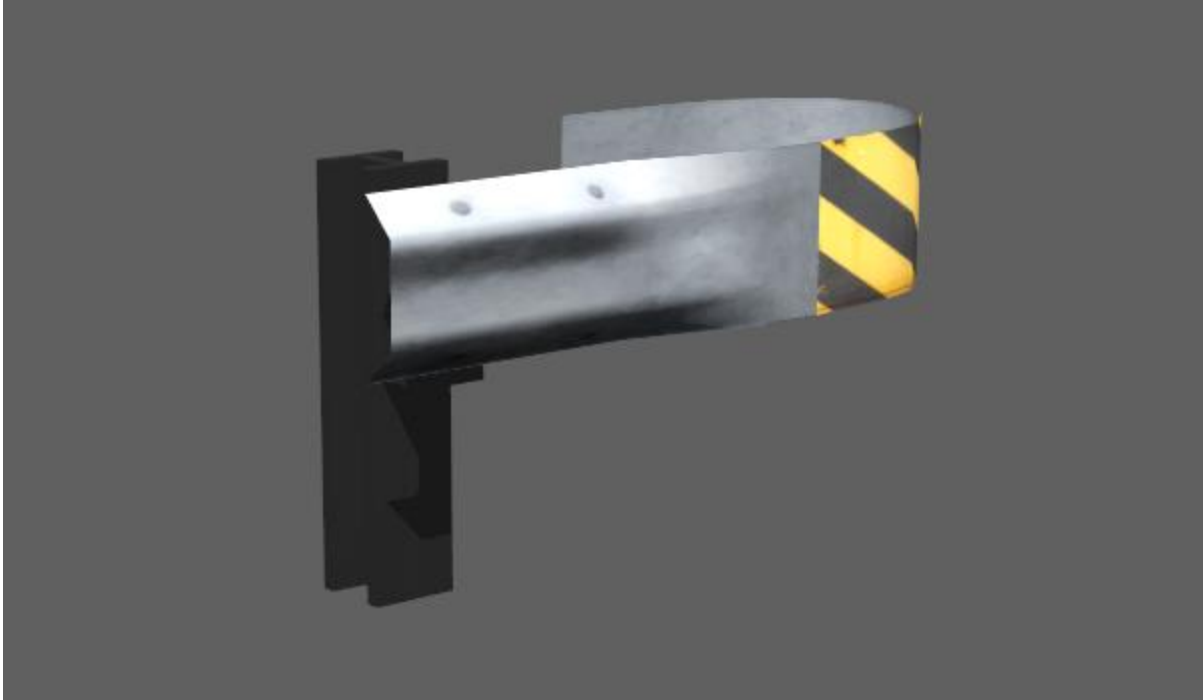


Figure 113. Guard rail end.

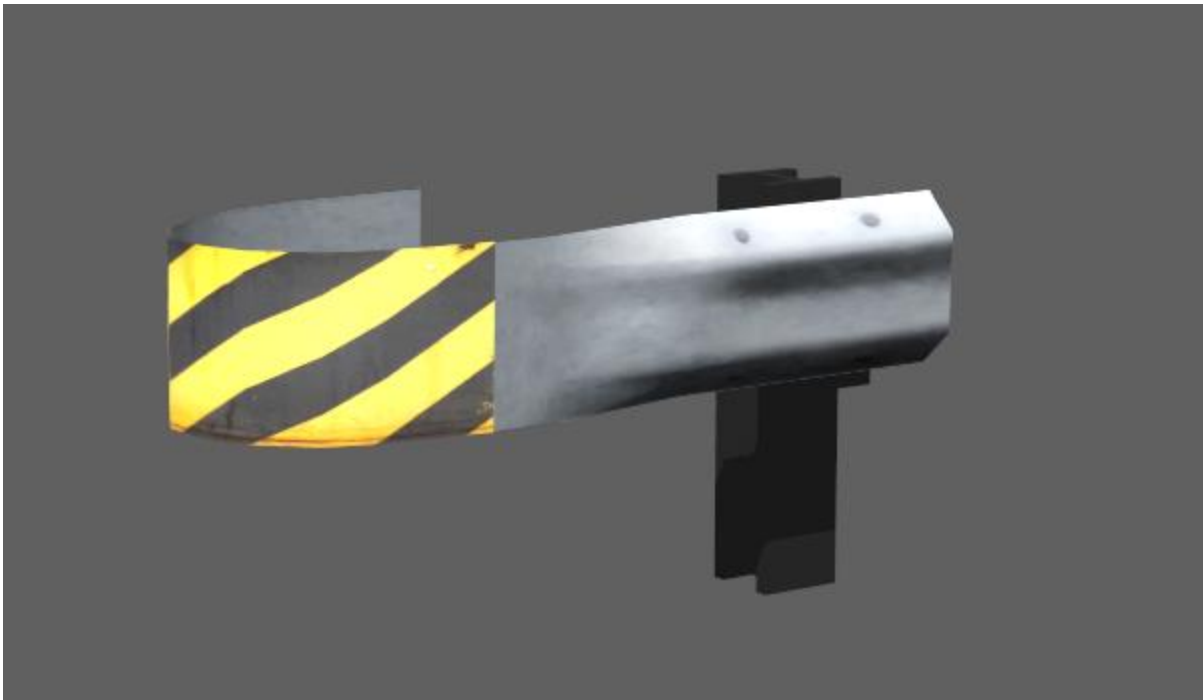


Figure 114. Guard rail start.



Figure 115. K & C machine.



Figure 116. Light pole A.



Figure 117. Light pole B.



Figure 118. Light pole C.



Figure 119. Light pole D.



Figure 120. Light pole E.



Figure 121. Mail box.



Figure 122. Park bench.



Figure 123. Pedestrian dummy.



Figure 124. Portable toilet.



Figure 125. Pump jack (animated).

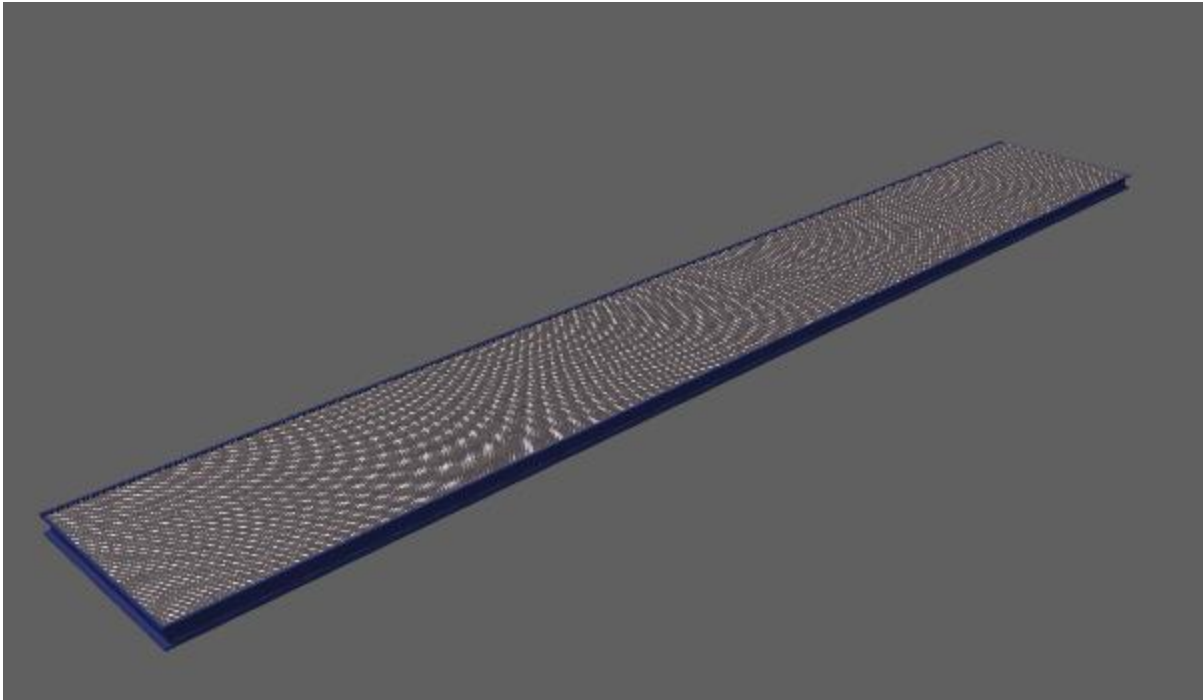


Figure 126. Tilt table.

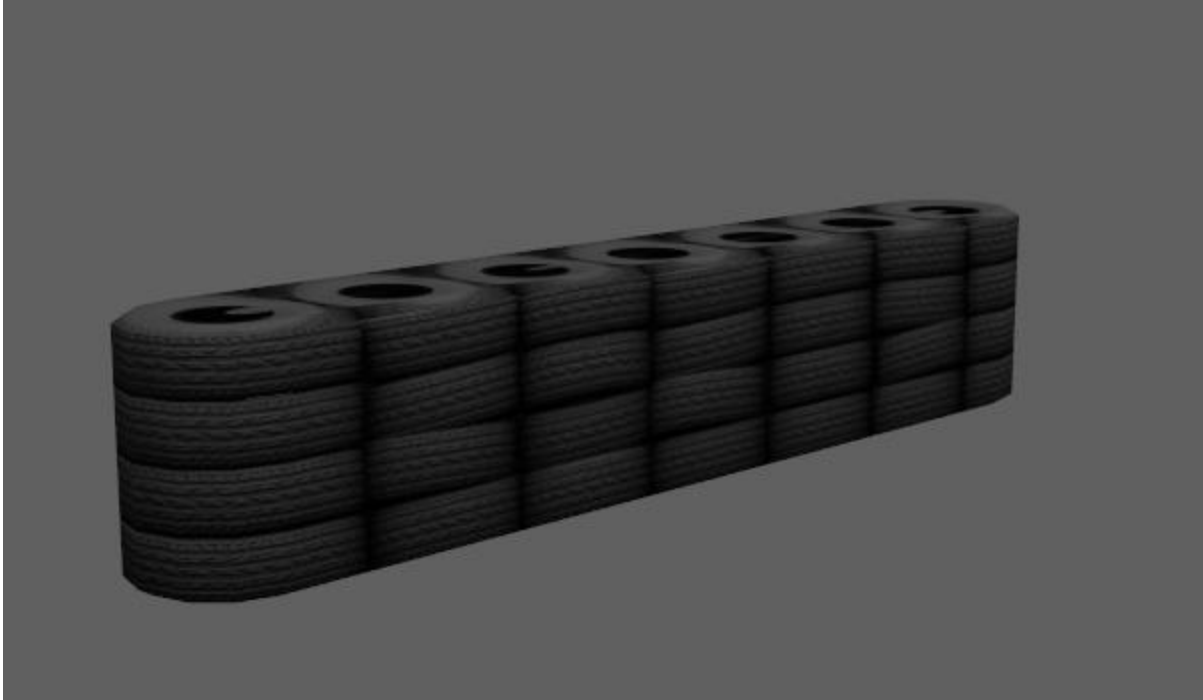


Figure 127. Tire wall large.

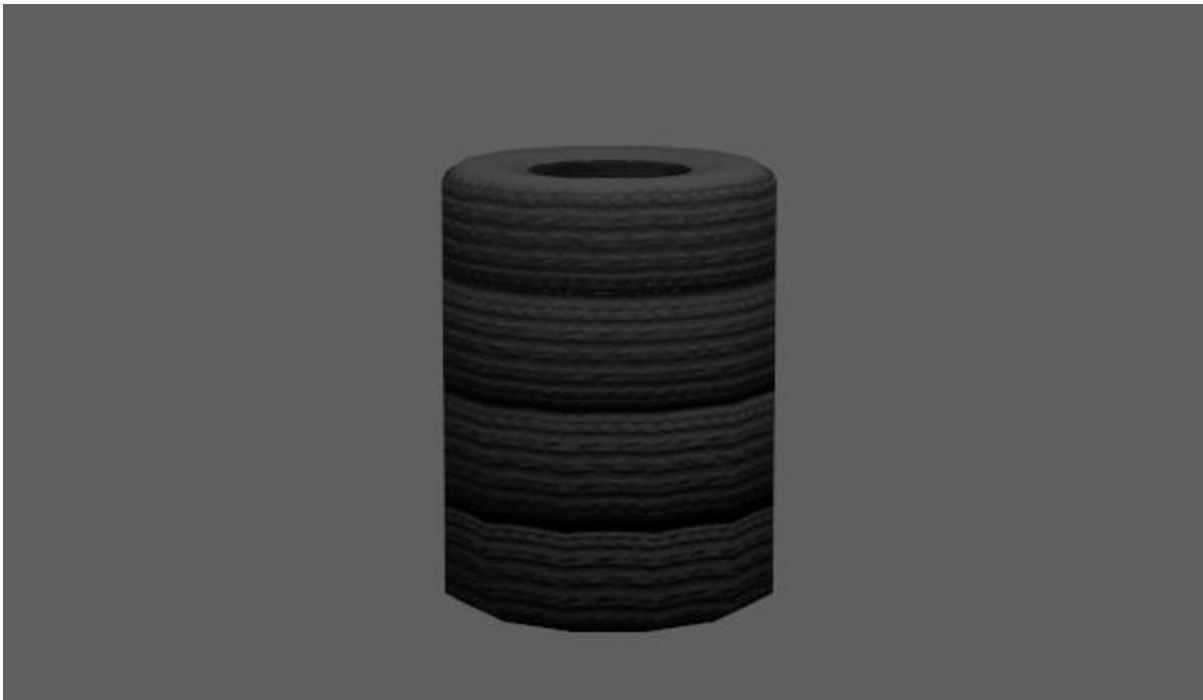


Figure 128. Tire wall, single.



Figure 129. Traffic barrel.

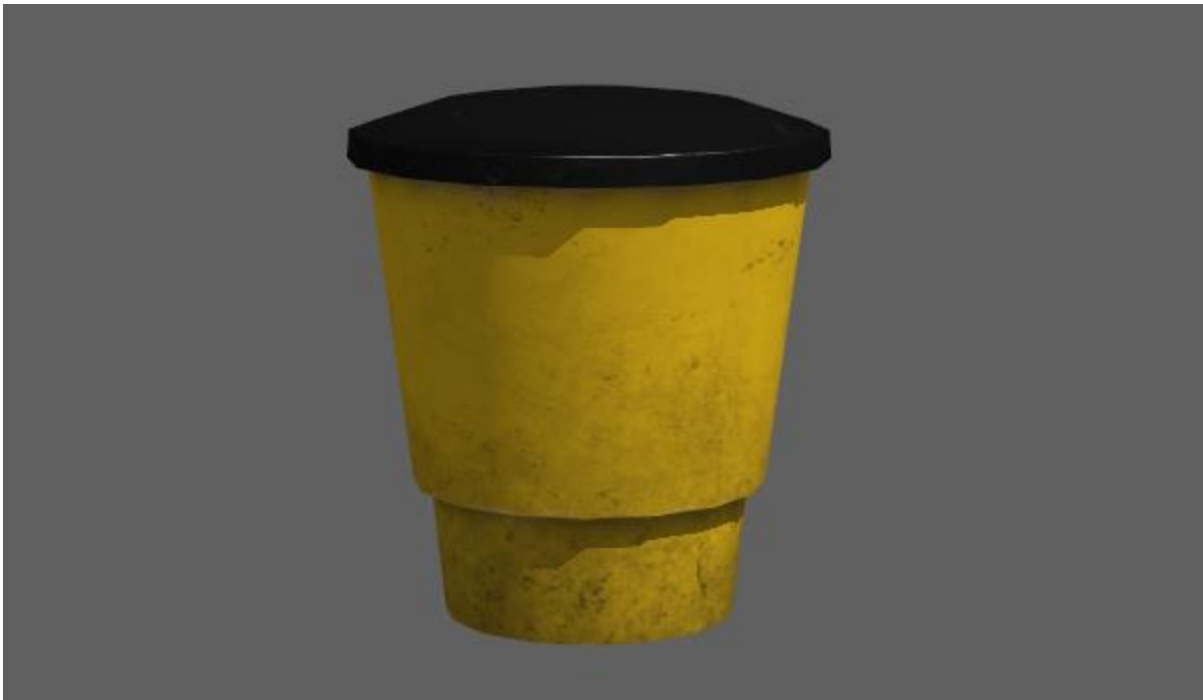


Figure 130. Yellow crash barrel.



Figure 131. Traffic cone.



Figure 132. Parking meter.



Figure 133. Waste basket.

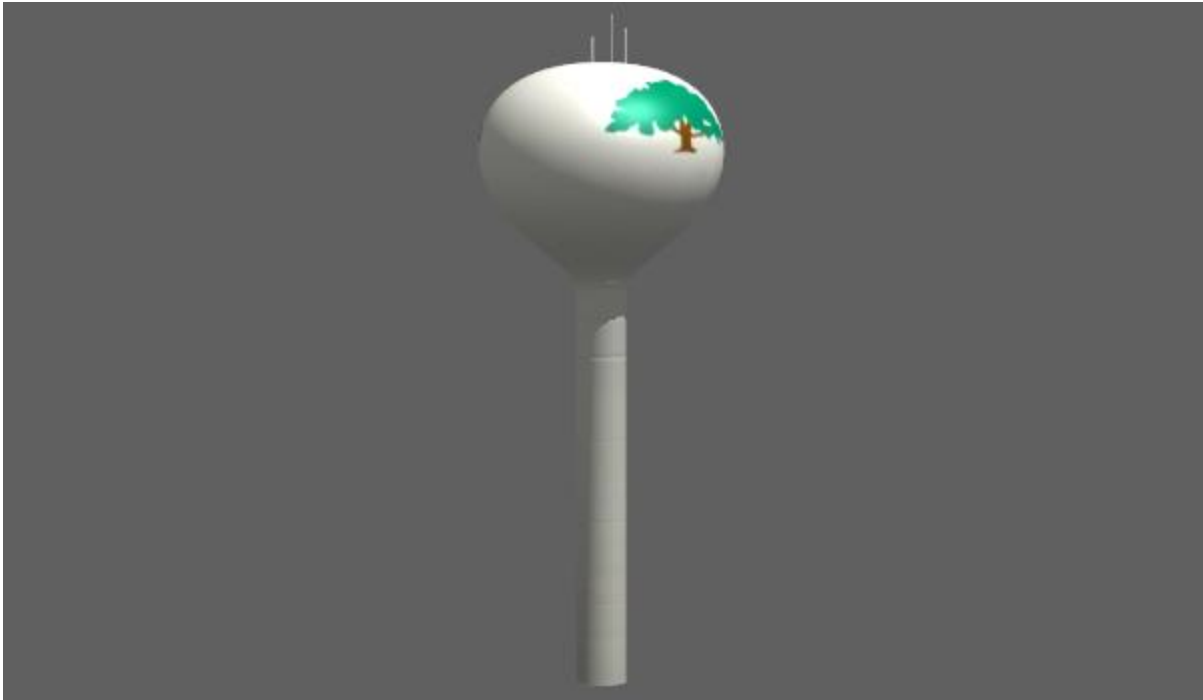


Figure 134. Water tower.



Figure 135. Wind mill (Animated).



Figure 136. Wind turbine (animated).

Road Signs



Figure 137. European speed signs (20/KMH to 120/KMH).



Figure 138. Bike lane sign.



Figure 139. Crosswalk sign (36"x36" and 48"x48").



Figure 140. Hospital sign.



Figure 141. No parking anytime sign.



Figure 142. No parking bus stop sign.



Figure 143. No parking sign.



Figure 144. No trucks sign.



Figure 145. No U-turn sign.



Figure 146. Railroad crossing sign.



Figure 147. Roundabout sign (36"x36" and 48"x48").



Figure 148. Curves ahead sign (36"x36" and 48"x48").



Figure 149. S-curve car sign.



Figure 150. Speed limit signs (5mph to 75mph and 18"x24", 24"x30", 30"x36", 36"x48" and 48"x60")



Figure 151. Stop sign (24"x24" and 36"x36").

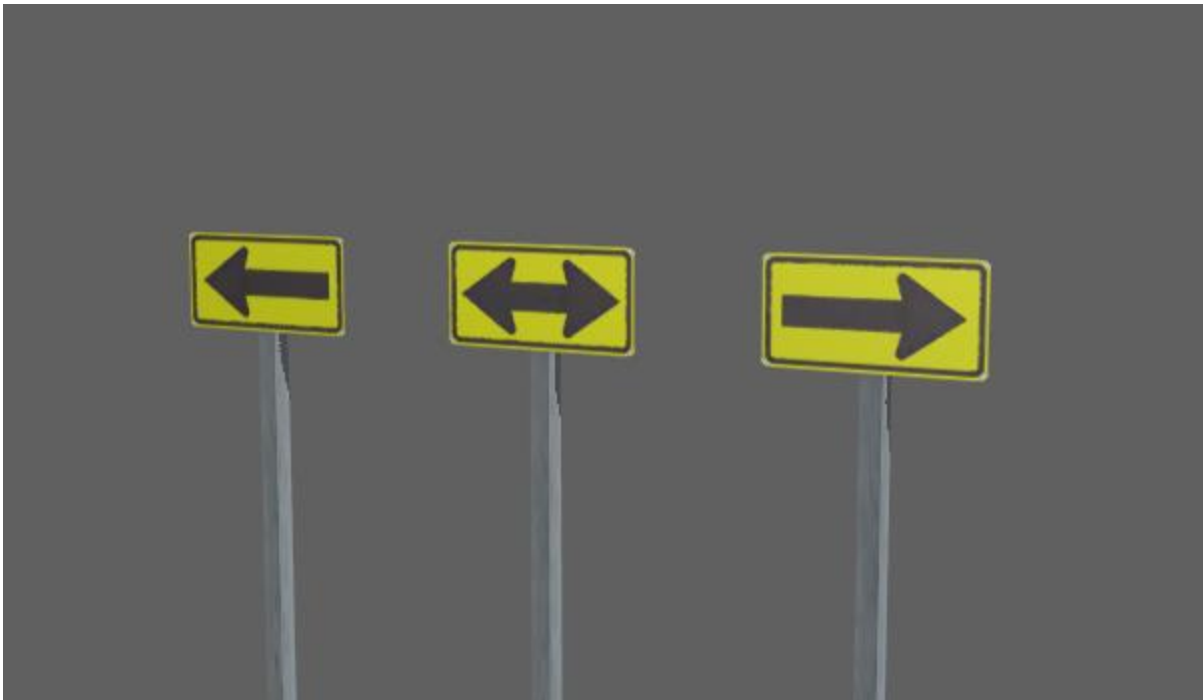


Figure 152. Traffic arrows: left, both and right (24"x12", 36"x18", 48"x24" and 60"x30").

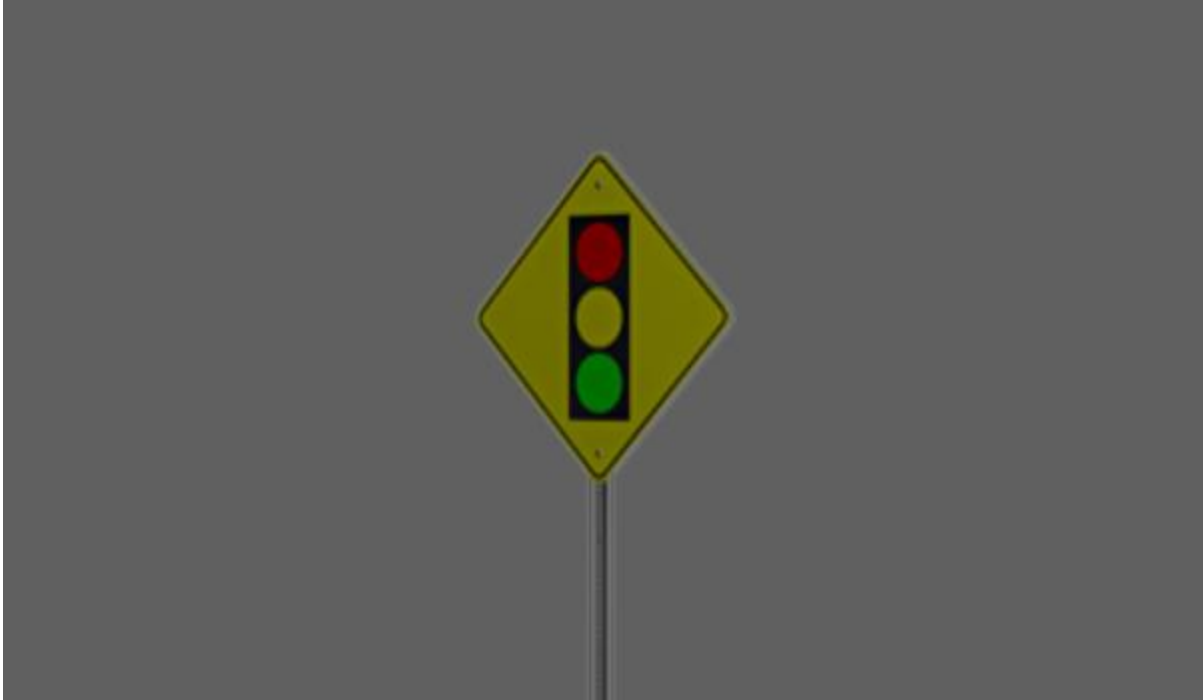


Figure 153. Traffic lights sign.



Figure 154. Traffic shift left sign.



Figure 155. Traffic shift right sign



Figure 156. Truck hill sign.



Figure 157. Left turn ahead sign (36"x36" and 48"x48").



Figure 158. Right turn ahead sign (36"x36" and 48"x48").



Figure 159. Two-way traffic sign.



Figure 160. Yield sign.

Trees



Figure 161. Maple.



Figure 162. Mixed forest.

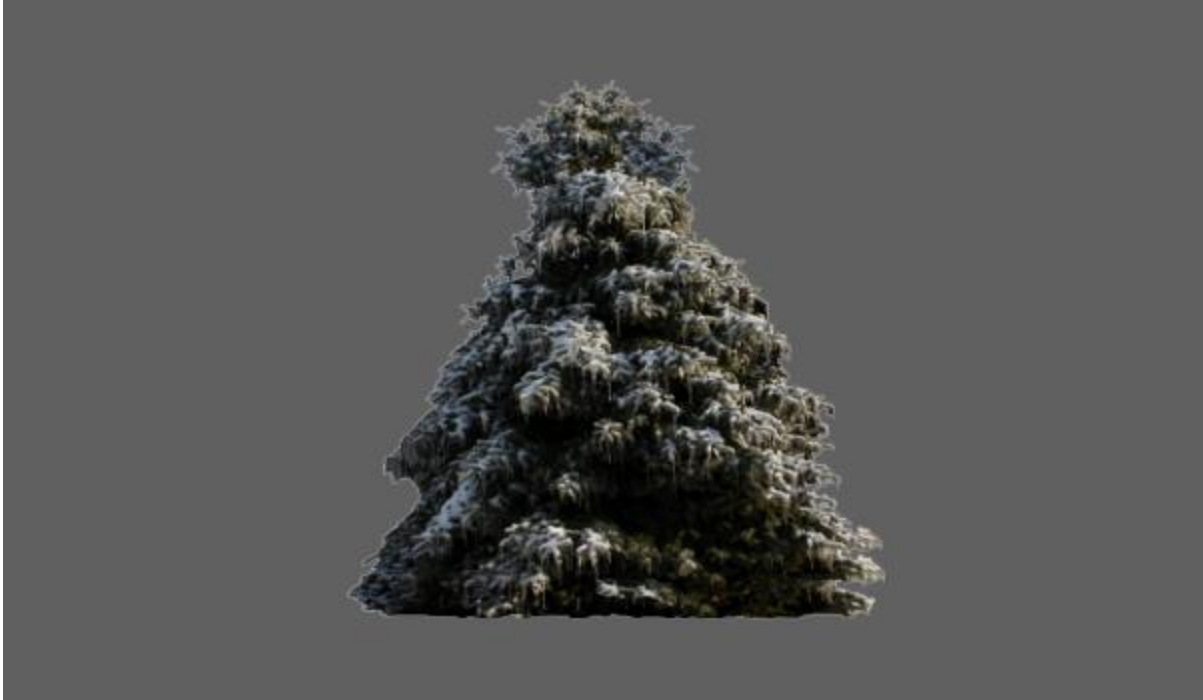


Figure 163. Snow covered pine.

Trailers

All Trailers



Figure 164. AEB dummy vehicle.



Figure 165. B-Train.

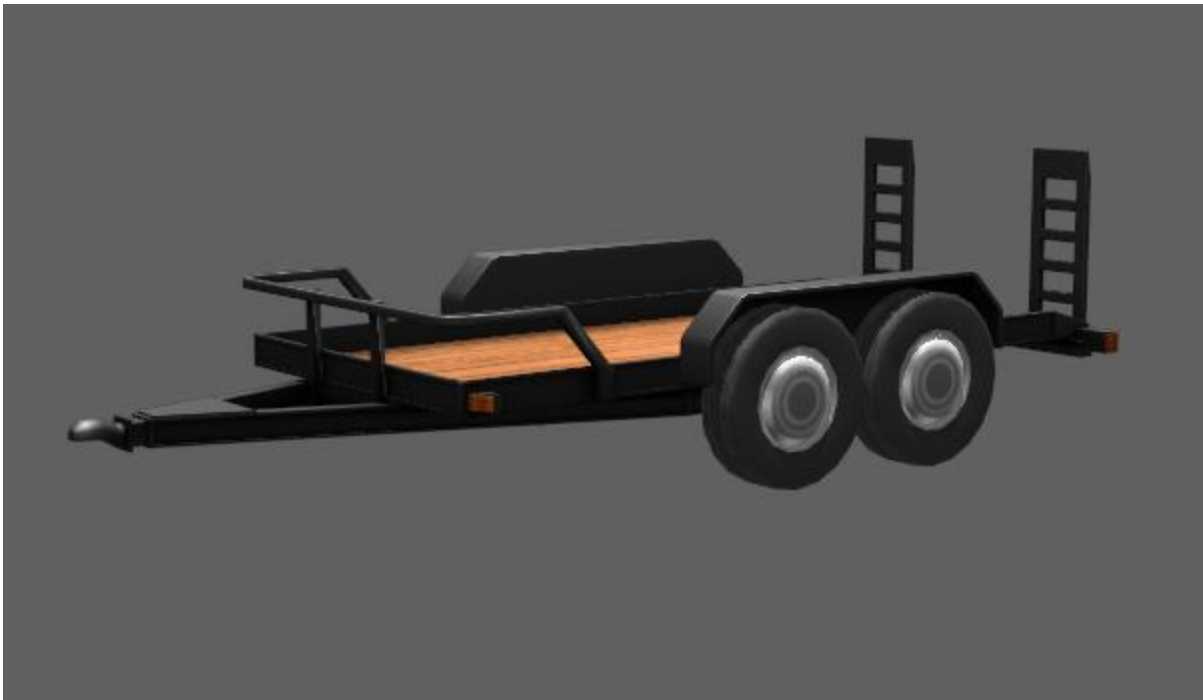


Figure 166. 2-axle ballast trailer.



Figure 167. Conventional box trailer.

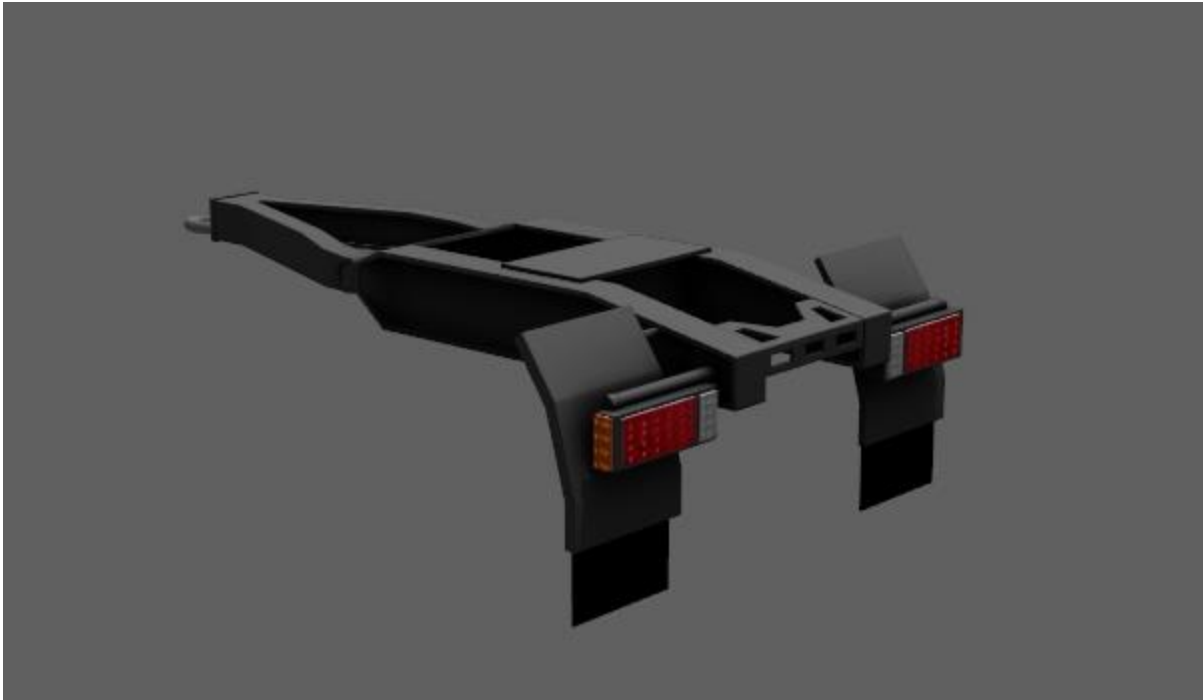


Figure 168. One-axle dolly.

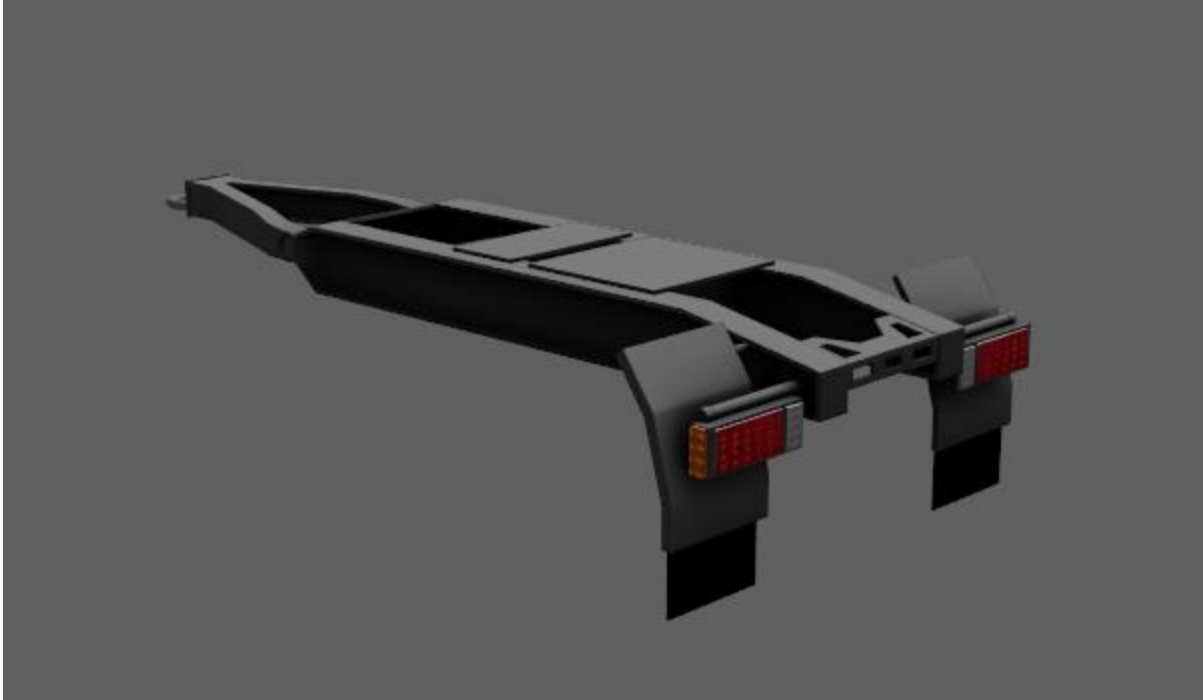


Figure 169. Two-axle dolly.



Figure 170. European trailer.



Figure 171. Flatbed trailer.



Figure 172. Shipping Container Trailer.



Figure 173. Gooseneck trailer.



Figure 174. Heavy hauler trailer.

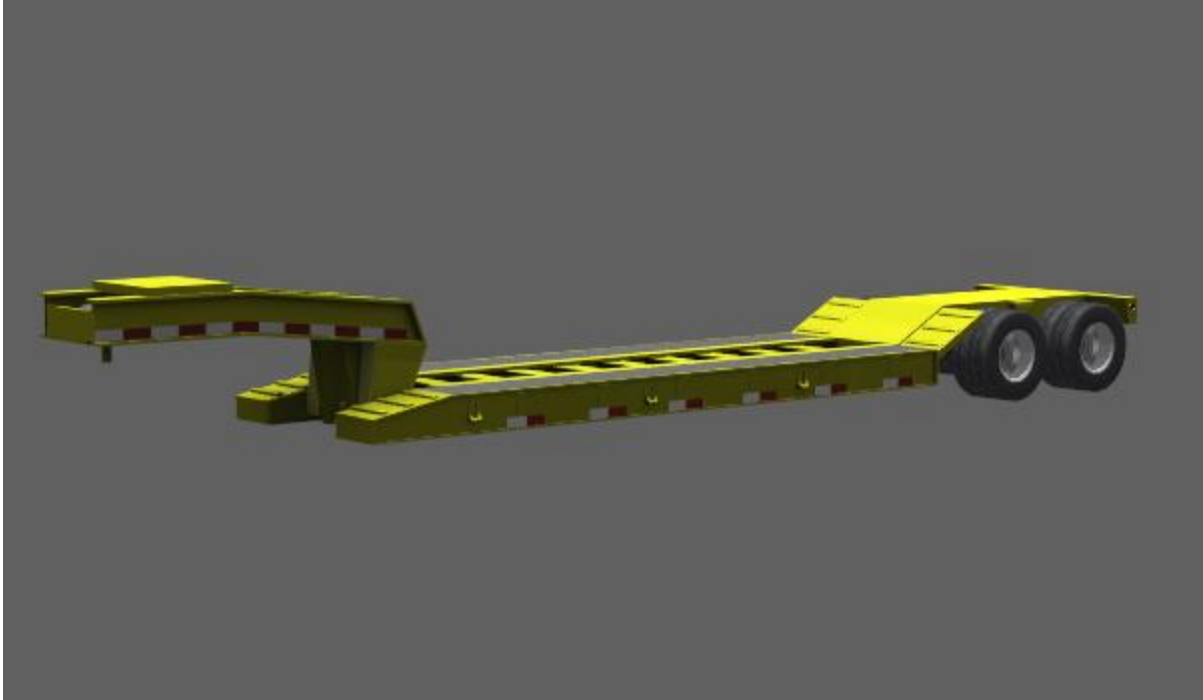


Figure 175. Lowboy trailer.



Figure 176. One-axle rental trailer.